



Stain

Antique Stain

EZCHEM Antique Stain is formulated to turn everyday grey concrete into a canvas of colours and patterns with decorative variation and shadings. These colours will penetrate into the surface of the concrete. EZCHEM Antique Stain can be applied to existing or new cured concrete and is suitable for both interior or exterior applications in homes, commercial area, and industrial areas.

EZCHEM Antique Stain is applied to any clean, cured, concrete surface or concrete overlay surface and allowed to react and dry. Once washed and sealed, the various colours applied become a permanent part of the concrete with lasting beauty.

ENVIRONMENTAL IMPACT:

EZCHEM Antique Stain contains no arsenic, lead, mercury, or volatile organic solvents.

BENEFITS:

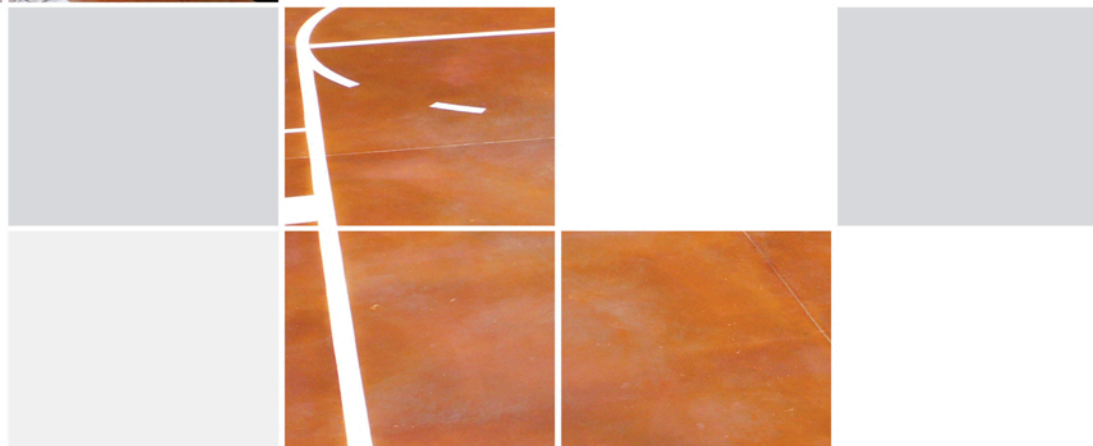
- **UV-stable** – Once dry and sealed, the concrete stain remains stable and resistant to weather and does not fade in sunlight.
- **A wide range of colours** – EZCHEM Antique Stain can be used at various dilutions and combinations to offer a multitude of colours and shades for any desired effect at beautifying plain concrete surfaces.
- **Ease of application** – EZCHEM Antique Stains does not require any neutralizing or labour intensive scrubbing. Once dry, it can easily be rinsed thoroughly of residue.
- **Economical** – The colours cover up to 150-250 square feet per litre.
- **Long shelf life** – EZCHEM Antique stains can be stored in the original bottle for up to one year with no loss of activity.

HOW TO USE:

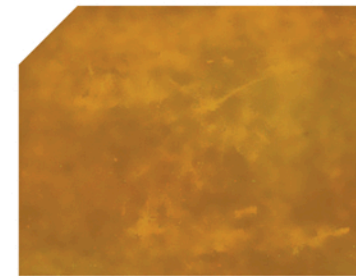
1. Clean the concrete surface to make sure it is free of any topical coatings, oil, grease, or dirt stains. Use CitraClean and BlueClean for this step.
2. Apply the stain with a brush, sponge, or plastic sprayer in the colour and technique of your choice.
3. Allow floor to dry thoroughly. Drying time will vary according to the surface conditions and humidity. Next, wash or damp-wipe any remaining residue.
4. Allow the stained floor to dry again and apply an EZCHEM Sealer to enrich the colour and protect the surface.

DESCRIPTION

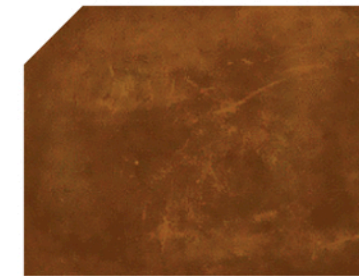
Pack size	: 5 litres / 25 litres
Colour	: Various
Odour	: Slight
Toxicity	: Low. Harmful if swallowed
VOCs	: Low. Less than 100gm/L
Flammability	: Non-flammable
Composition	: Various UV stable colouring agents.



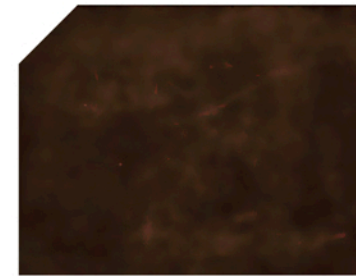
Antique Stain



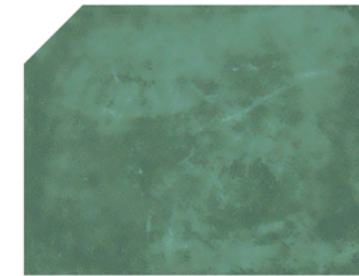
Malay Tan



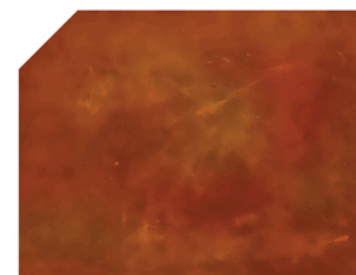
Cola



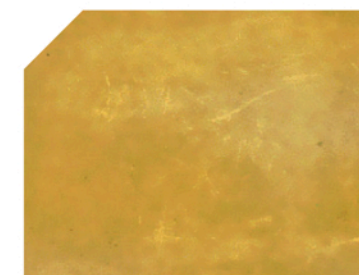
Black



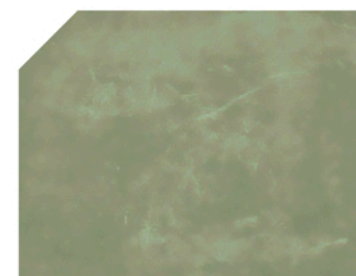
Aqua Blue



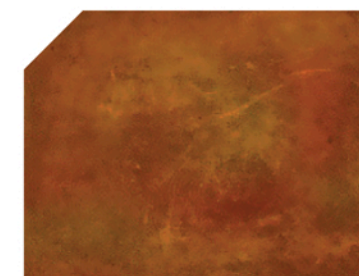
English Red



Golden Wheat



Green Lawn



Vintage Umber

EZCHEM ANTIQUE STAIN ARE A UNIQUE LINE OF VIBRANT CONCRETE STAINS SPECIALLY FORMULATED TO PRODUCE BRILLANT COLOURS THAT ARE NOT AVAILABLE BY ANY OTHER PROCESS. THE RESULTS ARE STRIKING, BRILLIANT AND DRAMATIC. EZCHEM ANTIQUE STAIN REACT WITH THE CONCRETE SURFACE TO PENETRATE AND BOND WITH THE CONCRETE FOR A PERMANENT EFFECT AND DOES NOT REQUIRE ANY NEUTRALIZATION. ALL OF THESE STAINS ARE UV STABLE. THEY WILL NOT FADE OR CHANGE COLOUR IN DIRECT SUNLIGHT, MAKING THEM IDEAL FOR INTERIOR OR EXTERIOR USE.

*(TL) Denotes Translucent Colours

*Colour variations can be expected due to differences in concrete and application methods.